



Allstate
BENEFITS

**Provides a cash benefit
directly to your beneficiary**

Underwritten by: American Heritage Life Insurance Company*

Universal Life Insurance

A death not only leaves behind loved ones, but also financial obligations. And, like many people, you may not have enough life insurance to keep your family afloat if an unexpected death occurs. Give yourself and your loved ones a gift of love with Good Hands® protection from Allstate Benefits.

Without a Life Insurance policy, your family may have to tap into their savings, retirement, or 401k to help cover final expenses and everyday living expenses should a loved one die unexpectedly.

Here's How It Works

You choose the coverage that's right for you and your family. With planning, the death benefit can pass to your beneficiaries free from state or federal estate taxes. Consult with your tax advisor for specific information. Then, if life comes to an end while coverage is in force, your beneficiary can receive a tax-free death benefit that can be used to help pay for funeral expenses, mortgage payments and more.

Meeting Your Needs

- You choose the death benefit amount to leave behind
- Coverage for spouse and children through a separate certificate or rider**
- Premiums are affordable and conveniently payroll deducted***
- Tax benefits, withdrawals and loans are available. However, penalties and taxes may affect your decision****

With Allstate Benefits, you gain peace of mind knowing your loved ones will receive a financial safety net when you die - think of it as your final gift of love.

Practical benefits for everyday living.®

DID YOU KNOW ?



Reasons for purchasing life coverage include: replace income, final expenses, wealth transfer and mortgage payoff.¹



Common financial concerns among Americans include: the ability to afford long-term care, medical and disability expenses, retirement, investments, living debt/expenses and final expenses.¹

*Allstate Benefits is the marketing name used by American Heritage Life Insurance Company, a subsidiary of The Allstate Corporation.
Coverage for spouse and child(ren) may be limited to a percentage of the member's face amount in some states. *This is a flexible premium adjustable life insurance product with non-guaranteed elements. Premiums may need to be increased to maintain coverage to maturity (age 95). ****Partial withdrawals, surrenders, non-qualified additional benefit rider charges and loans from life insurance policies may be subject to ordinary income taxes and possibly an additional 10% federal tax penalty. Outstanding loan balances and withdrawals generally reduce the death benefit and cash value. With proper planning, the death benefit can pass to your beneficiaries free from state or federal estate taxes. Please consult with your tax advisor for specific information. ¹2019 Insurance Barometer Report, LIMRA

Meet Jordan

Jordan is like any parent who has emotional and financial responsibilities. He's worried about how his family will make ends meet if he dies unexpectedly. Most importantly, he worries about leaving them with a large debt.

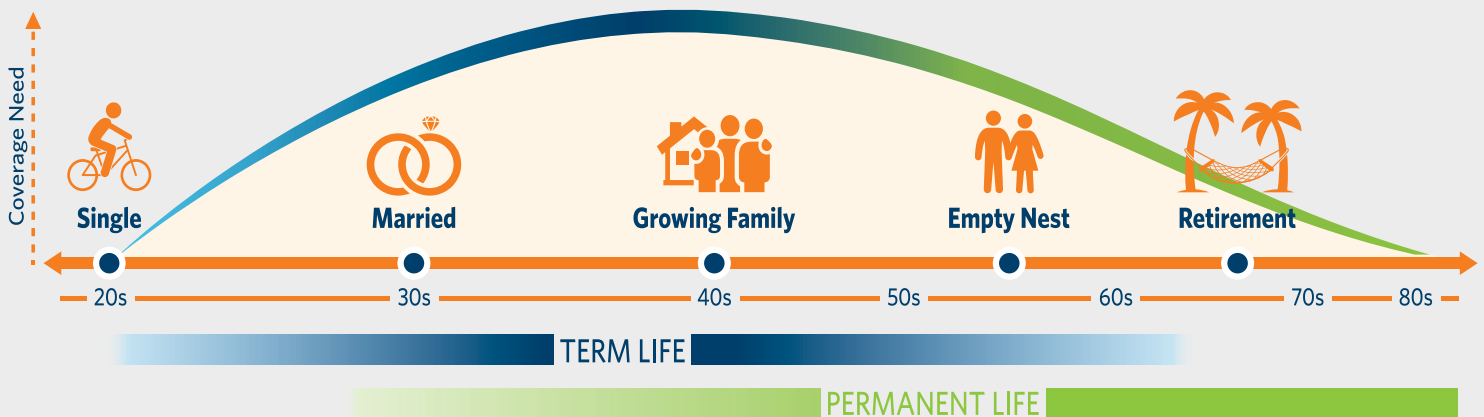
Here is what weighs heavily on his mind:

- The cost of funerals often leaves a financial commitment behind for surviving loved ones
- Money may be needed for his family's day-to-day living expenses, such as food, gas and electricity
- He still owes a substantial amount on his mortgage before it is paid off
- His children will need income for child care and educational expenses as they get older



Coverage for all stages of life

As people move through the stages of life, certain factors dictate the type of life insurance they need. During working years, a group may provide Term Life insurance, but the wraparound coverage of our Group Universal Life product can help give peace of mind because the money you spent builds cash value that you can use later in life or add to the term benefit payout. The graph below illustrates the need for term and permanent life insurance throughout the various stages of life.



The examples above detail fictional thought processes and needs; your individual needs and reasons for coverage may vary.

Using your cash benefits

Cash benefits provide you with options, because you or your beneficiary get to decide how to use them.



Finances

Cash benefits can help protect your HSAs, savings, retirement plans and 401ks from being depleted



Travel

Your coverage will provide cash benefits to your beneficiary which can be used to help with travel related funeral expenses



Home

Your beneficiary can use the cash benefits to help pay the mortgage, continue rental payments, or perform needed home repairs



Expenses

The lump-sum cash benefit can be used to help pay for living expenses such as bills, electricity and gas



With proper planning, the death benefit can pass to your beneficiaries free from state or federal estate taxes. Please consult with your tax advisor for specific information.

You may be required to answer health questions at enrollment. Coverage may be available with reduced underwriting through your group during your initial enrollment period. If you enroll after your initial enrollment period, answers to health questions are required.

Prepare for the future today

Losing a loved one can be devastating. Final expenses and daily bills only add to your worries. Our Universal Life Insurance coverage may be used to:

- Pay off a mortgage or debts
- Provide for child care or educational expenses
- Replace income to continue the same standard of living

One way you can determine if you and your family need the coverage is to review the list below and check some or all that apply to you and your family.

- You're the primary wage earner in your family
- Your family would have trouble living comfortably without your income
- You have regular debts, like mortgage, car payment or credit cards
- You have children under 18
- You want flexible coverage that can change with your needs
- You'd like to plan to supplement your retirement income in later years

Here's how Universal Life works

Premium payments are deducted from your paycheck and added to the fund value. Each month, expenses and cost of insurance charges are deducted from the fund value and any excess in the fund continues to earn interest at a rate of at least 3% per year. Interest is not taxed as income until it is withdrawn.

Fund value and premium payments

As you continue to pay your premium, your fund value may grow over time. Monthly premiums are flexible, meaning you can choose to pay as much or as little as you can afford, subject to policy minimums and maximums. Premiums may need to be increased to maintain coverage to maturity (age 95).

Benefits

Life Insurance - pays a lump-sum cash benefit when you die

ADDITIONAL RIDER BENEFITS²

Accidental Death Benefit - an additional death benefit is paid if death occurs from accidental bodily injury

Accelerated Death Benefit for Terminal Illness* - an advance of the death benefit, up to 75% of the face amount, when certified terminally ill

Accelerated Death Benefit for Long Term Care** - a monthly advance of the death benefit for qualified long-term care services after a 90-day elimination period when certified chronically ill by a licensed health care practitioner. The maximum monthly benefit is 4% of the death benefit

Extension of Benefits for Long Term Care - increases the death benefit month-by-month for up to 25 months while receiving qualified long-term care services, after it has been depleted by the Accelerated Death Benefit for Long Term Care rider

Total Disability Payor Waiver of Premium - we pay your planned premiums when we receive proof that the member/payor is totally disabled for at least 6 months

Children's Term³ - a death benefit is paid for each covered child more than 24 hours and not yet 25 years old

²The riders have exclusions and limitations, may vary in availability by issue age, and may not be available to all covered dependents or in all states. Additional premiums may be required for riders added to coverage. ³Subject to state limits on dependent life coverage. *Monthly Deductions are waived after payment of benefit. **Monthly Deductions are waived for the months when the benefit is payable.

For additional information,
please contact:
Benefit Architects

Telephone:
800-733-7236

Email:
allstate@benefitarchitects.com

CERTIFICATE SPECIFICATIONS

Pre-Existing Condition Limitation for the Accelerated Death Benefit for Long Term Care Rider and the Extension of Benefits for Long Term Care Rider - Benefits are not paid for a period of chronic illness care resulting from a pre-existing condition that begins within the first 6 months after the effective date of coverage. This does not apply to a period of care beginning 6 months after the effective date. A pre-existing condition is a condition, whether diagnosed or not, for which symptoms existed within the 6-month period prior to the effective date, or medical advice or treatment was recommended or received from a medical professional within 6 months before the effective date.

EXCLUSIONS AND LIMITATIONS

Accelerated Death Benefit for Long Term Care Rider and Extension of Benefits for Long Term Care Rider - Benefits are not paid for long-term care services that are: a result of mental or emotional disorder (except for Alzheimer's Disease, senility, or senile dementia that are of organic origin); a result of alcoholism or drug addiction; a result of illness, treatment, or medical conditions due to: act of war, participation in a felony, riot, or insurrection, serving in the armed forces or auxiliary units, suicide or attempt at suicide, or intentionally self-inflicted injury; provided in a government facility (unless required by law); services for which benefits are available under Medicare (except for deductibles or co-insurance requirements) or other governmental program (except Medicaid), any state or federal workers' compensation, group's liability or occupational disease law, or any motor vehicle no-fault law; received outside the United States or its territories.

Accidental Death Benefit Rider - Benefits are not paid if death results from, directly or indirectly, or is contributed to by, wholly or in part, from the following causes: suicide, or an attempt at suicide; accidental bodily injury due to mental or bodily illness or disease of any kind; committing or attempting an assault or felony; intentionally taking any drug (unless prescribed by a physician), alcohol, or poison, inhaling gas or fumes; operating, riding in, or descending from aircraft if: a pilot or officer or crew member, the purpose is descent from the aircraft during flight, giving or receiving training or instruction, or working aboard the aircraft; insurrection, war (conflict involving the armed forces of any country or countries), or an act of war, while serving or not serving in the military.

Total Disability Payor Waiver of Premium Rider - Benefits are not paid if disability results from intentionally self-inflicted injury; war or an act of war while the payor is serving in the military of any country.

Suicide Exclusion for Group Universal Life and the Children's Term Rider

If the insured or rider insured commits suicide within 2 years of the effective date of coverage, the death benefit will be limited to the premiums paid.

This brochure is for use in enrollments situated in DC. This advertisement is a solicitation of insurance; contact may be made by an Allstate Benefits Agent, Agency, or Representative.

It is possible that coverage will expire when either no premiums are paid following the initial premium or subsequent premiums are insufficient to continue coverage.

Rev. 5/21. This material is valid as long as information remains current, but in no event later than May 1, 2024.

Group Universal Life Insurance benefits are provided under policy form GUL23P, or state variations thereof. Rider benefits are provided under the following rider forms, or state variations thereof: Accelerated Death Benefit for Terminal Illness Rider (GULBR); Accelerated Death Benefit for Long Term Care Rider (GULTC); Extension of Benefits for Long Term Care Rider (GULTCEXT); Total Disability Payor Waiver of Premium Rider (GUPWP); Accidental Death Benefit Rider (GUADB); Children's Term Rider (GUCTR).

This is a brief overview of the benefits available under the group policy underwritten by American Heritage Life Insurance Company (Home Office, Jacksonville, FL). Details of the coverage, including exclusions and other limitations are included in the certificates issued.



Allstate Benefits is the marketing name used by American Heritage Life Insurance Company, a subsidiary of The Allstate Corporation. ©2021 Allstate Insurance Company.
www.allstate.com or
allstatebenefits.com